



SOUTH LONDON
WASTE PARTNERSHIP

WASTE WATCH 2023/24



Working together
to tackle waste

CROYDON
www.croydon.gov.uk



Contents

Introduction	3
Where the waste came from	4
Where the waste went	6
The facilities we use to treat waste	8
The waste journey - Croydon	12
The waste journey - Kingston	13
The waste journey - Merton	14
The waste journey - Sutton	15
List of re-processors and off-takers	16
Appendix A: table of tonnages sent to each off-taker by borough	20

266,185

Tonnes of waste collected from households between April 2023 and March 2024.

13%

Reduction in non-recyclable waste over the last seven years (despite a growing population).

96+%

Of all the waste and recycling handled by SLWP between April 2023 and March 2024 was treated at facilities within the UK.

Introduction

The South London Waste Partnership (SLWP) is a voluntary partnership between the London boroughs of Croydon, Kingston, Merton and Sutton. Established in 2003, the SLWP is responsible for transporting, sorting and processing all the recycling and waste generated by one million residents living in the four boroughs.

The SLWP boroughs have made good progress in recent years in reducing waste volumes, maximising recycling and reducing carbon emissions associated with recycling and waste management. A big part of this is down to the commitment and dedication of residents, who

are increasingly trying to minimise the amount of waste they produce in the first place and then diligently sorting any waste they do create ready for it to be recycled.

In return for those efforts, it is of paramount importance that residents have complete trust and confidence that the recycling they sort out at home is handled with care and is *actually* recycled whenever possible. It is also important that residents trust that anything that cannot be recycled or has not been sorted for recycling is disposed of in the best and most environmentally sustainable way possible.

That's why this report is so important. Published on an annual basis, it will provide complete transparency on where waste comes from, where it goes and what happens to it; right down to the last tonne. This first edition focuses on the waste generated between April 2023 and March 2024. We hope you find it informative and reassuring.



For more details about the work of the SLWP, visit www.slwp.org.uk

99.98%

The proportion of waste handled by the SLWP that was either recycled, composted or sent for energy recovery. Just 0.02% ended up in landfill.

41%

The average recycling rate across the four SLWP boroughs (well above the London average of 33%).

76%

The proportion of residents who would like to know more about where their recycling and waste is taken and what happens to it.

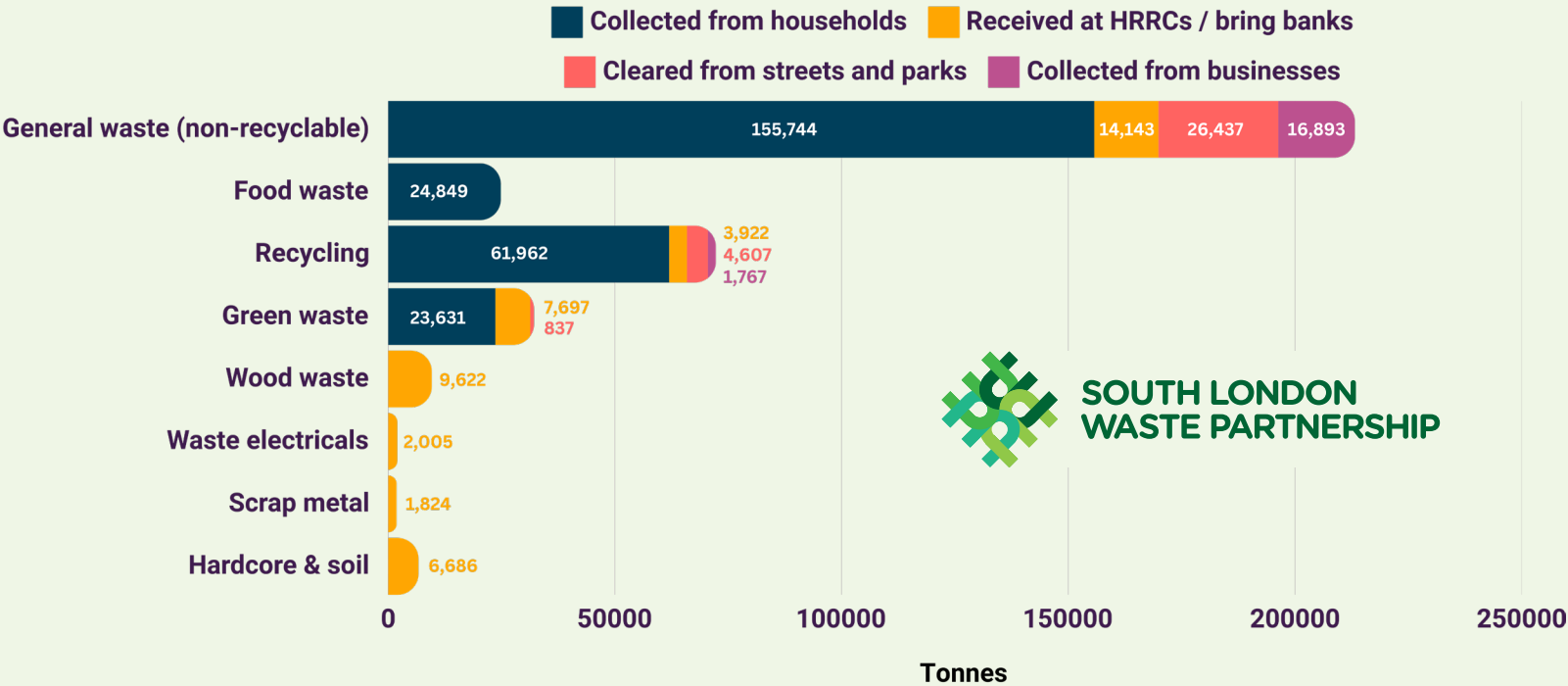
Where the waste came from

Between April 2023 and March 2024, the SLWP handled a total of 362,626 tonnes of recycling and waste on behalf of the four partner boroughs.

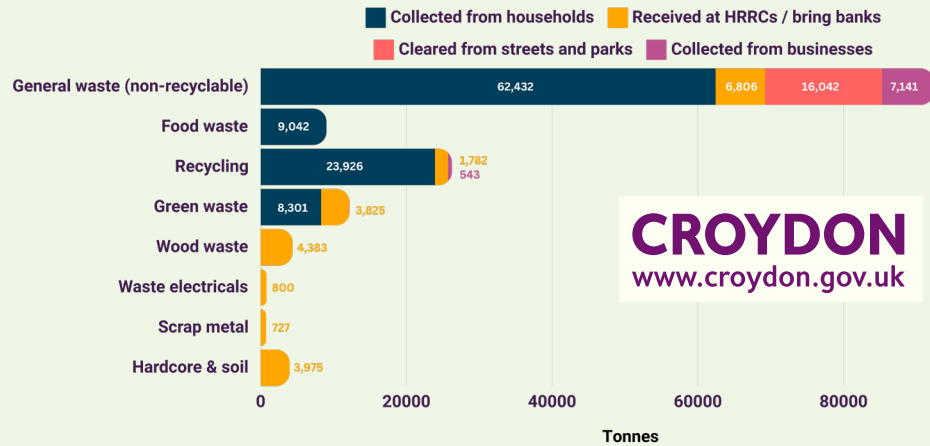
Around three-quarters (266,185 tonnes) was collected from the 400,000 households across the SLWP region. 13 percent (45,899) was received at the six Household Reuse and Recycling Centres

(HRRCs), nine percent (31,882) was collected from public streets and parks (including fly tips) and the rest (18,660 tonnes) was collected from local businesses (note this only accounts for businesses who choose to use Veolia’s SLWP Commercial Waste Collection Service). The graphs on these pages provide a detailed breakdown of where the waste came from, for the SLWP as a whole and then split by each of the four boroughs: Croydon, Kingston, Merton and Sutton.

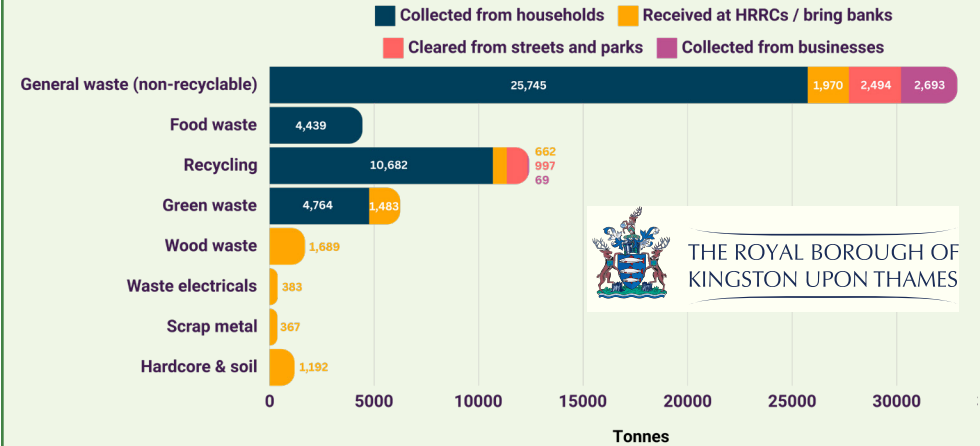
SLWP total - tonnes (2023/24)



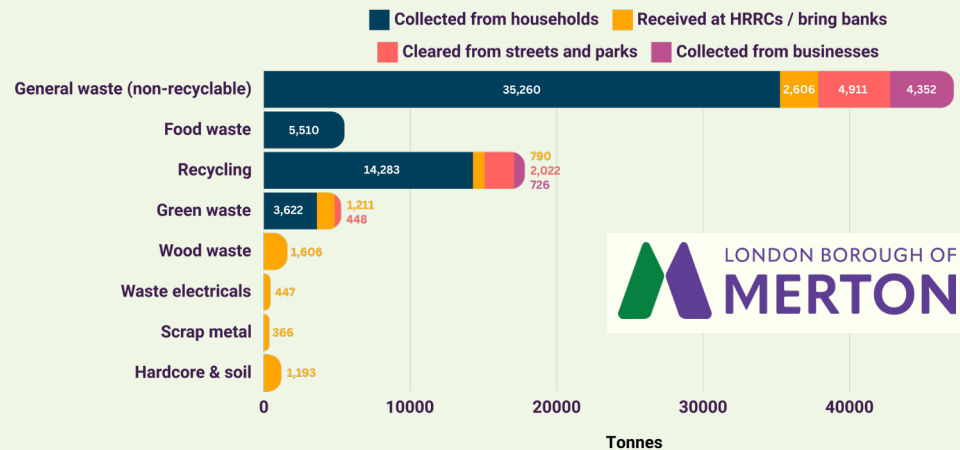
Croydon - tonnes (2023/24)



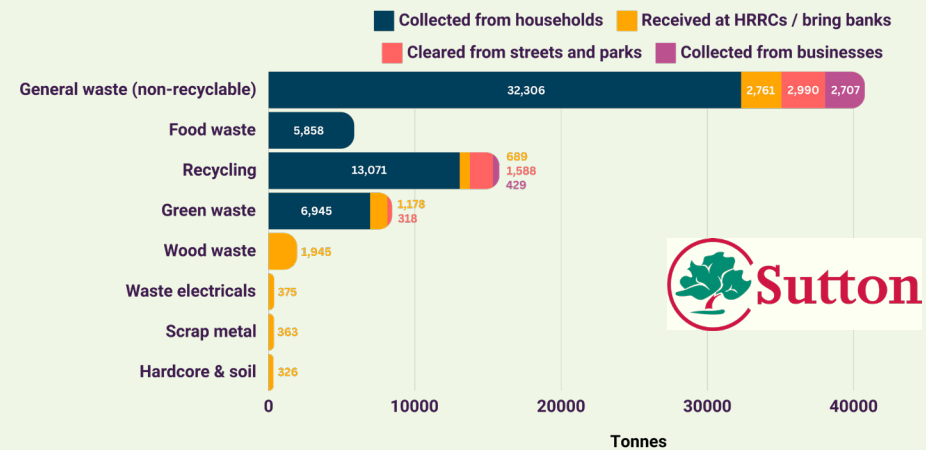
Kingston - tonnes (2023/24)



Merton - tonnes (2023/24)



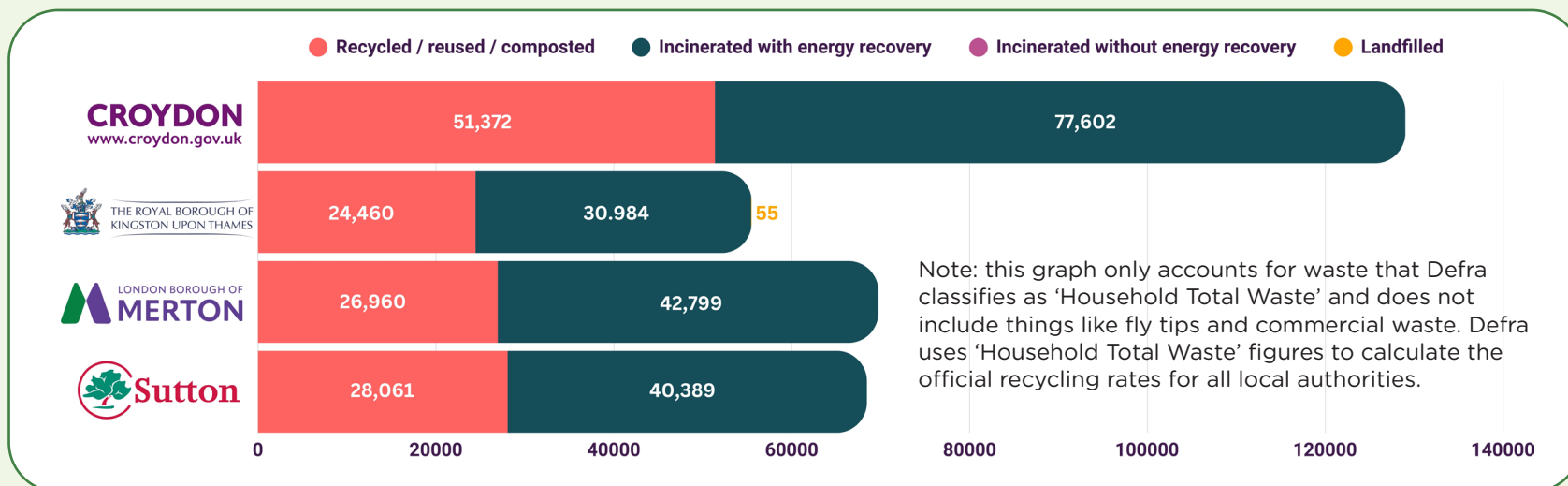
Sutton - tonnes (2023/24)



Where the waste went

Our objective is to always treat waste as high up the 'waste hierarchy' as possible.

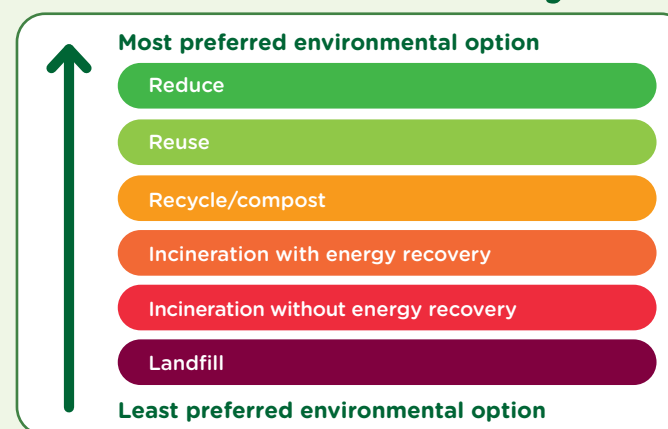
In 2023/24, 41% of the household waste we handled was recycled or composted and 59% was sent for incineration with energy recovery. A tiny amount (less than 0.02%) was sent to landfill and none was sent for incineration without energy recovery.



We also try to treat waste as close to home as possible, to reduce carbon emissions associated with transport. In 2023/24, more than 96% of the waste and recycling we handled was treated at facilities within the UK.



The Waste Hierarchy





The facilities we use to treat waste

We use a range of specialist facilities to store, sort, process, treat and dispose of the waste we collect.

Waste transfer stations

Waste Transfer Stations are large covered storage areas where waste and recycling is delivered by the collection vehicles that visit your home every week. When the collection vehicles arrive, they are weighed before they tip their load.

The different types of waste and recycling are kept apart in separate storage bays. After tipping, the collection vehicles can get back to their rounds. The waste and recycling is collected by large HGVs ready for transport on to the next stage in the journey.

Waste Transfer Stations are important in improving the efficiency and reducing the carbon footprint of the collection service. During 2023/24, the SLWP made use of waste transfer stations in Mitcham (Merton), Morden (Merton), Coomber Way (Croydon), West Croydon and Villiers Road (Kingston).

Re-processors

Re-processors are companies that take recyclable materials from the Materials Recovery Facilities and make them into new products. During 2023/24 more than 100 different re-processors received recycling that was collected from homes across the SLWP region – see page 16 for details.



Materials Recovery Facilities

A Materials Recovery facility or 'MRF' (pronounced 'murf') is a specialist facility where mixed recycling is sorted by machine and by hand into single material streams. These can then be sold to re-processors who turn the recyclable materials into new items.

When it arrives at a MRF, the recycling is weighed and quality checked. It's then fed onto loading conveyors by mechanical shovel. The mixed recycling is sorted using a series of rotating screens, magnets, eddy current and optical scanners to separate out the plastics, glass, cans and cartons. Once the machines have done a rough sort, human 'pickers' take over to ensure the different materials have been properly sorted. The sorted recycling is then bailed (squashed into cubes) and sold to re-processors.

During 2023/24, the SLWP sent most of its recycling to MRFs in Rainham (East London), Wolverhampton and Avonmouth (near Bristol).

Paper mills

Most of the paper and card we collect from homes has already been sorted into a separate bin by residents so it doesn't need to go to a MRF. Instead, it can go straight from the Waste Transfer Station to a specialist paper mill, where it is treated and turned into new paper-based products (paper and card collected from flats in Croydon, Merton and Sutton is mixed with other recycling so it has to go to a MRF first).

In 2023/24, the SLWP sent most of its paper and card recycling to a specialist facility in Kemsley, Kent, operated by DS Smith (pictured below), the largest paper mill for recycled papers in the UK.



Anaerobic Digestion plants

Anaerobic Digestion (AD) plants are where food waste is taken for treatment. They can often be spotted by their distinctive green-domed digester tanks.

These facilities digest the food waste in an anaerobic (without air) environment which produces two useful products. The first is a nutrient-rich liquid bio-fertiliser which is used by UK farmers to help grow the fruit and vegetables that end up back on our plates. The second (which may surprise you) is biogas: The gasses produced during the digestion process (which takes about 75 days) are captured and used to drive a turbine which generates electricity. The electricity is fed into the National Grid.

During 2023/24 the SLWP sent food waste to AD plants in Mitcham (Merton), Surrey and Buckinghamshire.



Composting facilities

Any garden waste collected from households across the SLWP region or brought to one of the six Household Reuse and Recycling Centres ends up at a composting facility.

Here the green waste is shredded and composted over a six month period to produce peat free, high quality compost. The CO₂ levels are checked daily and the temperature is kept below 65°C so you get a living product filled with good bacteria and fungi – perfect for improving soil. Unlike anaerobic digestion plants, these facilities allow the green waste to naturally decompose in the presence of air.

During 2023/24 the SLWP sent most of its garden waste to a composting facility in Hampshire.

Landfill sites

Landfill sites are large holes in the ground (often disused quarries) where waste that cannot be recycled is buried. They have been widely used across the UK since the late nineteenth century as a safe and convenient way of disposing of non-recyclable waste. Between the late 1990s and 2020, the SLWP disposed of its non-recyclable waste at the Beddington Landfill Site in Sutton (pictured below).

We now recognise how harmful landfill sites are to the environment (biodegradable waste lets off methane, a powerful greenhouse gas, as it decomposes underground). As a result, the use of landfill sites is becoming less common. In 2020 the Beddington landfill site closed and now the vast majority of the SLWP's non-recyclable waste is treated at the Beddington Energy Recovery Facility (see next page).

We only send small amounts of waste to landfill if the Energy Recovery Facility is closed for maintenance and there are no other, more sustainable options, available to us.





Household Reuse and Recycling Centres (HRRCs)

Household Reuse and Recycling Centres (HRRCs) allow residents to recycle and responsibly dispose of a wide range of materials that are not included in the kerbside collection service, including: rigid plastics (toys, garden furniture, buckets, bins etc.), scrap metal, wood, engine and cooking oil, car and household batteries.

There are six HRRCs managed by the SLWP on behalf of the four partner boroughs: Villiers Road (Kingston), Garth Road (Merton), Kimpton Park Way (Sutton), Factory Lane (Croydon), Fishers Farm (Croydon) and Purley Oaks (Croydon).

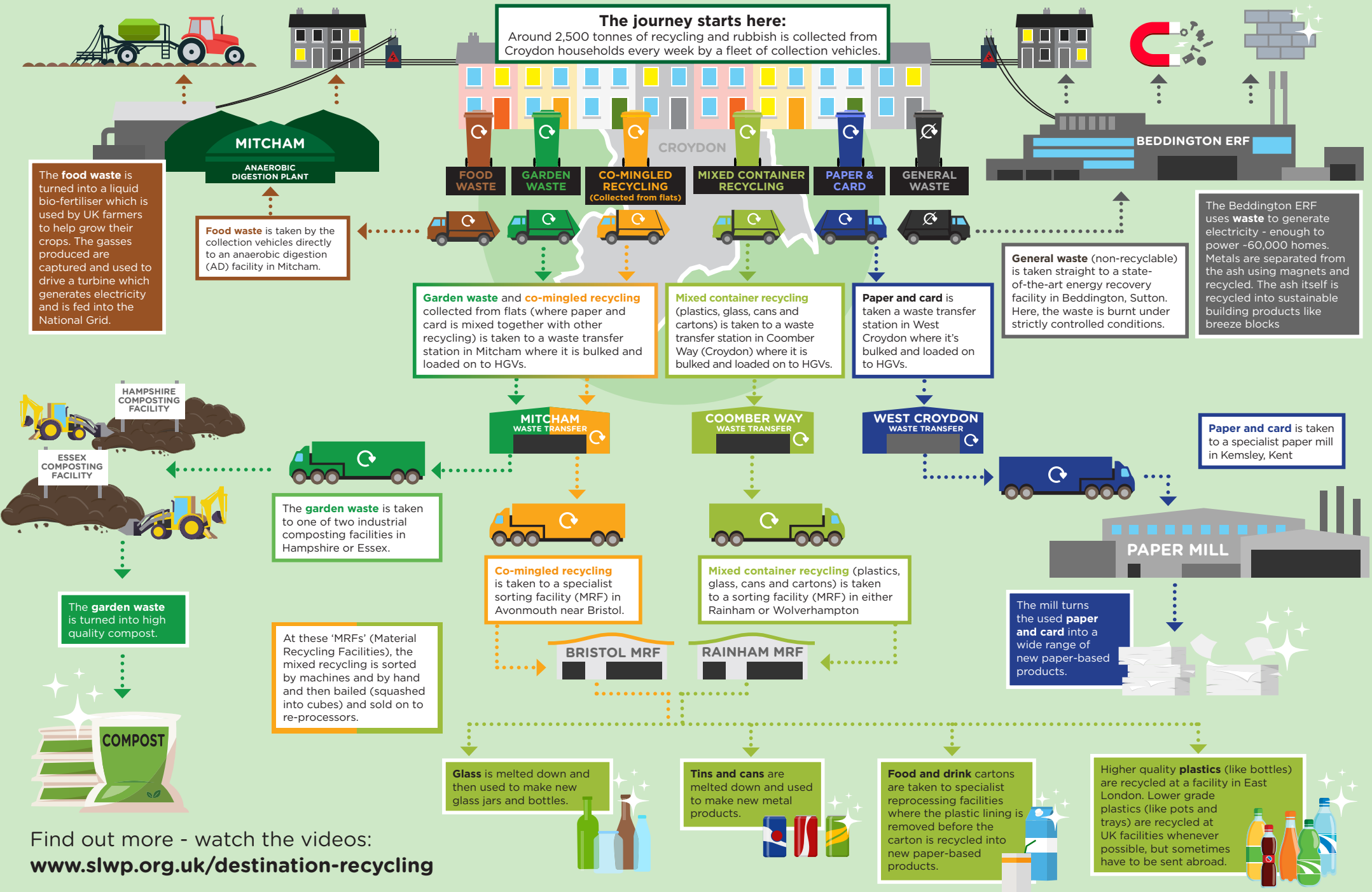
Energy Recovery Facilities (ERF)

Energy Recovery Facilities (ERFs) are the modern replacement for landfill sites. ERFs burn waste that either cannot be recycled or has not been separated for recycling at very high temperatures in strictly controlled conditions. This super-heats water in special boilers which produces steam and drives a turbine to generate electricity – and lots of it: ERFs generate about 3% of all the electricity used in the UK. Many ERFs (including the one used by the SLWP at Beddington) also recycle the ash and the metals that are left at the end of the treatment process, and some provide low-carbon heating and hot water to nearby homes and businesses via insulated pipes.

In 2023/24 the SLWP sent most of its non-recyclable waste to the Beddington ERF in Sutton (pictured), which produces enough electricity to power itself plus 60,000 homes.

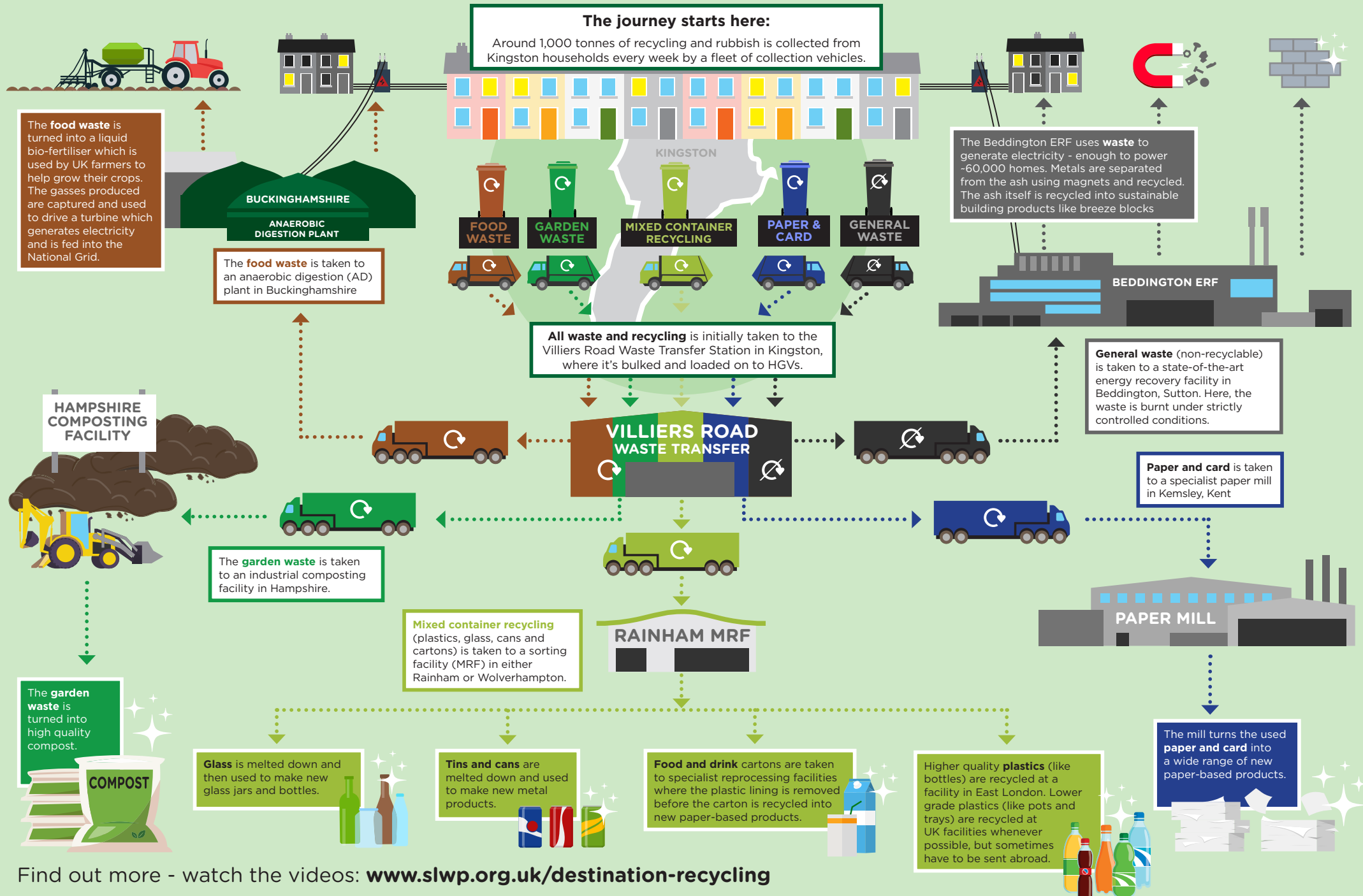


THE WASTE JOURNEY - CROYDON

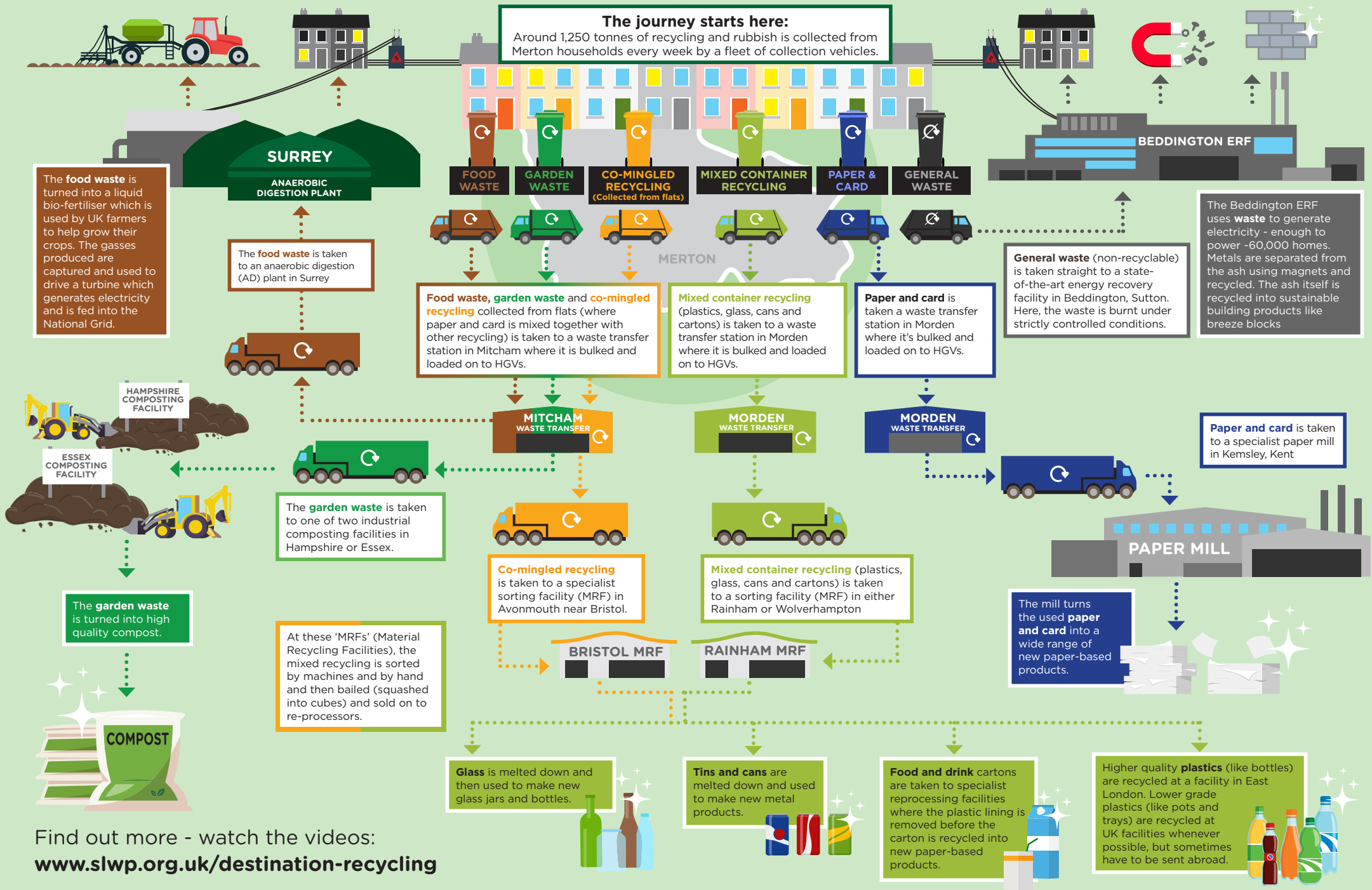


Find out more - watch the videos:
www.slwp.org.uk/destination-recycling

THE WASTE JOURNEY - KINGSTON



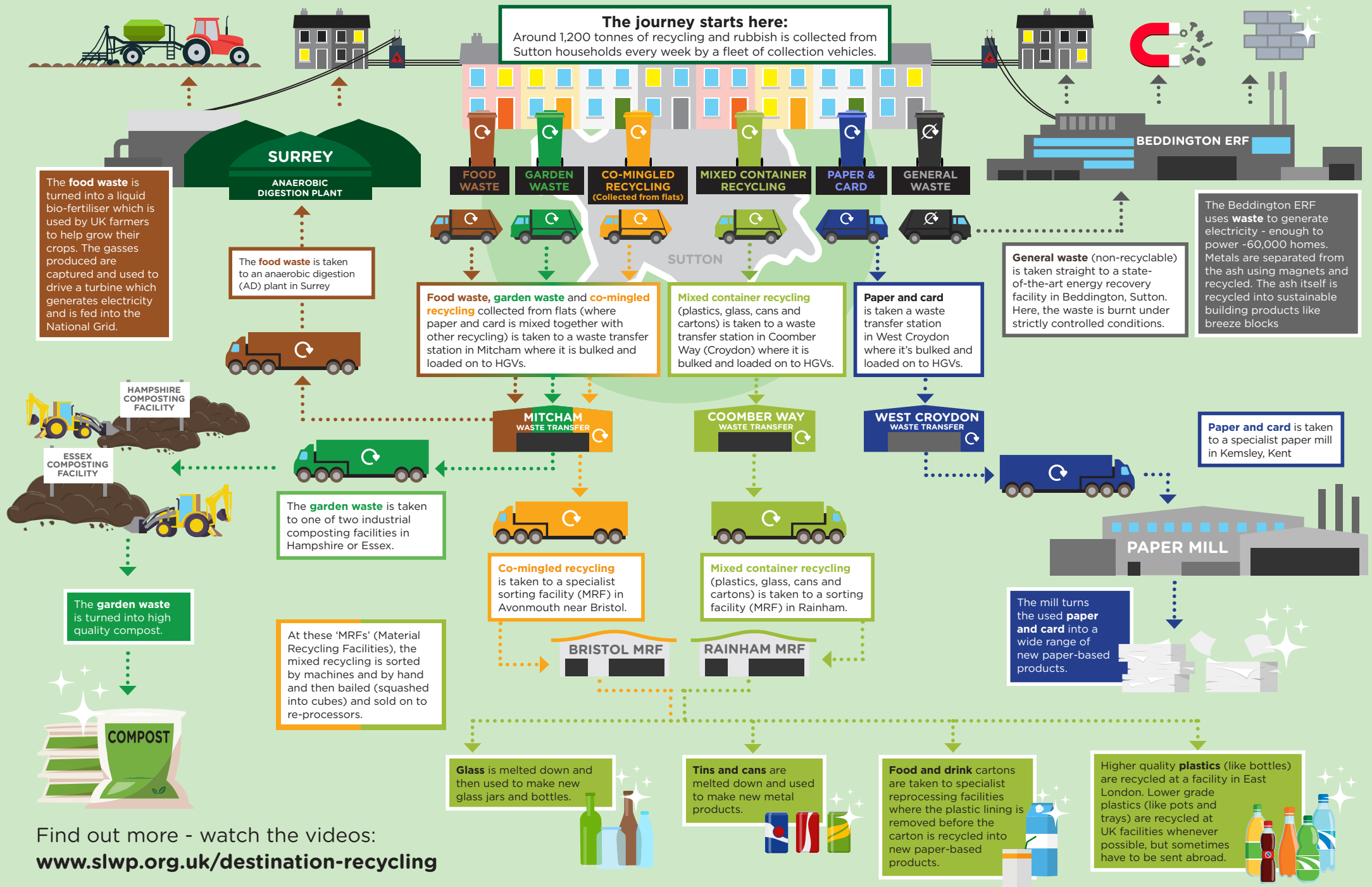
THE WASTE JOURNEY - MERTON



Find out more - watch the videos:

www.slwp.org.uk/destination-recycling

THE WASTE JOURNEY - SUTTON



Find out more - watch the videos:
www.slwp.org.uk/destination-recycling

List of re-processors and off-takers

In 2023/24 the SLWP used more than 175 off-takers and re-processors to treat and process waste and recycling.

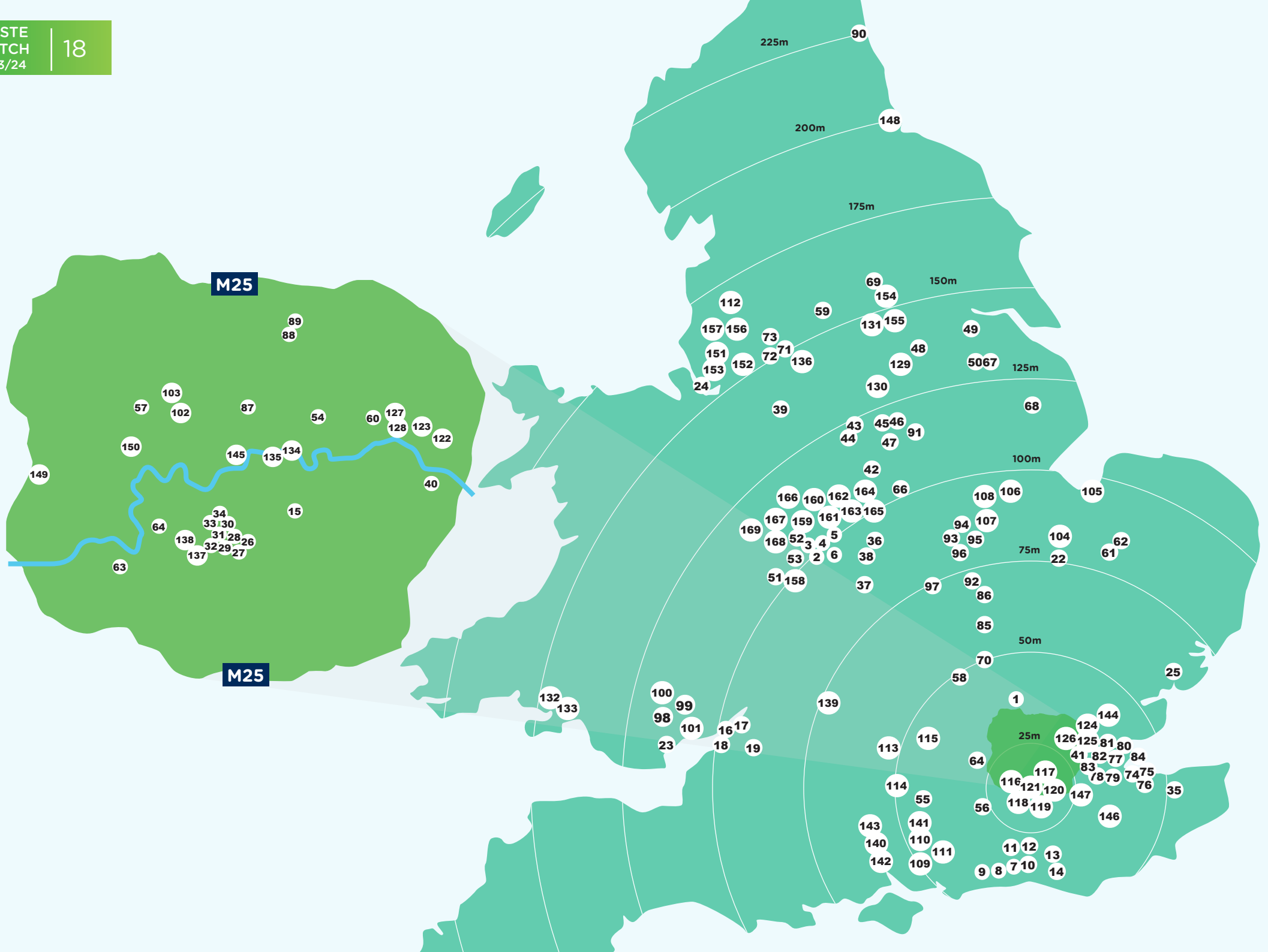
The next two pages provide a list detailing the name and postcode of these facilities. Pages 18 and 19 show a map of the UK and Europe, plotting the location of each of these facilities.

1	Pearce Recycling Company Ltd	AL4 0JY	36	AA Battery Recycling	CV11 6RS
2	Sims Group U K Ltd	B66 2LF	37	Berry Circular Polymers	CV31 3SS
3	Alutrade Ltd	B69 4NH	38	Palm Recycling Ltd	CV6 4QG
4	Robert Hopkins Environmental Services Limited	B70 7HE	39	Tandom Metallurgical Group Ltd	CW12 4XE
5	City Metals Recycling Ltd	B70 9DR	40	N&P Crayford MRF Ltd	DA1 4QG
6	Suez Recycling & Recovery UK Ltd	B8 1AE	41	Pinden Limited	DA2 8EB
7	World Of Books	BN12 4QY	42	Sims Group U K Ltd	DE21 4BL
8	BCMY Ltd	BN17 7QU	43	Ryder Point Works Wirksworth	DE4 4HE
9	Medisort Ltd	BN17 7QU	44	Stacey Processing Ltd	DE4 4HE
10	Cooper Barnes Metals Ltd (EMR Group)	BN43 6RN	45	Jayplas	DE55 2DT
11	Sweeptech Environmental Services Ltd	BN5 9SE	46	J & A Young (Leicester) Ltd	DE55 2FT
12	Robins Michael	BN6 9BS	47	British Polythene Limited	DE75 7RG
13	M D J Light Bros Ltd	BN8 6JN	48	Morris & Co Handlers Ltd	DN11 0PS
14	Veolia ES South Downs Ltd	BN9 0HE	49	Acetech Metals Ltd	DN16 1AP
15	Chris Carey Collections	BR3 1LW	50	Clean Tech Europe Limited	DN21 5TU
16	Boomeco Limited	BS11 0YB	51	Slicker Recycling Limited	DY13 9BZ
17	Viridor Waste Management Ltd	BS11 0YU	52	A B Waste Management Limited	DY4 9BS
18	Suez Recycling And Recovery Uk Ltd	BS11 8AQ	53	Green World Recycling Ltd	DY9 8RG
19	Veolia E S (U K) Ltd	BS30 5LW	54	Lawrence M Barry & CoBritannia	E16 4TG
20	Green World	BT35 8NN	55	Wastecare Limited	GU34 5SQ
21	Cherry Pipes Ltd (Cherry Plastics)	BT67 9JD	56	Green World Trading Limited	GU6 8TB
22	Witcham Meadlands Landfill	CB6 2AY	57	Traid	HA0 1ER
23	Reddy Pai Metals Ltd	CF10 4RU	58	Olleco	HP22 5WJ
24	Day Group Recresco	CH65 1AB	59	Sonoco Cores And Paper Ltd	HX4 9PY
25	Eastern Waste Disposal Limited	CO7 0SD	60	Cory Barking Operations Ltd	IG11 0DW
26	European Metal Recycling Ltd	CR0 3DH	61	Freedom Recycling Ltd	IP26 4JQ
27	D&M Recycling	CR0 4TD	62	Plas Solutions	IP26 4JQ
28	Greendaw Recycling Ltd	CR0 4TD	63	British Heart Foundation	KT10 0BF
29	Soex European Recycling Co Ltd	CR0 4TD	64	Severn Trent Green Power	KT16 0EF
30	Viridor Waste Management Ltd	CR0 4TD	65	Kingston Community Furniture	KT3 3SF
31	B Nebbett & Son Ltd	CR4 4HX	66	J & A Young Leicester Ltd	LE11 0FJ
32	EMR Mitcham	CR4 4HX	67	Plasgran Agricycle	LN8 2AG
33	Riverside A D Limited	CR4 4NA	68	Polypipe	LN9 6JW
34	Deadman Confidential	CR4 4NB	69	IMPETUS	LS9 0NX
35	Synergy Asset Services Limited	CT4 7BA	70	Dunstable Waste Transfer and Recycling Facility	LU5 5BQ

71	Manchester Paper Plastic Ltd	M12 5BW
72	Mercury Recycling Limited	M17 1HW
73	Roydon Resource Recovery Ltd	M27 8LU
74	Sweeep Kuusakoski Ltd	ME10 2QB
75	DS Smith Paper Ltd	ME10 2TD
76	London and Kent Metals	ME10 3SY
77	Viridor Plastic Recycling	ME2 4QP
78	SRCL Ltd	ME20 6SQ
79	London Mining Associates Limited	ME20 7FG
80	Composting Facilities Services	ME3 9ND
81	P&D Material Recovery Ltd	ME4 4SR
82	Street Fuel Limited	ME4 4SR
83	Smurfit Kappa UK Ltd	ME6 5AX
84	Day Group	ME9 8SR
85	Veolia ES (UK) Limited	MK43 9LY
86	Monoworld Recycling Ltd	MK44 1NB
87	Carretera Nacional	N1 9JY
88	Metal & Waste Recycling Group Ltd	N18 2PD
89	Biffa G S Environmental Limited	N9 0BD
90	Plasgran Monarch	NE32 3HG
91	PRO ENVIRONMENTAL LIMITED	NG14 6NR
92	Monoworld Recycling Ltd	NN10 6BQ
93	Sun International Recycling Group Limited	NN17 4AP
94	Accuma Plastics	NN17 4DS
95	Baileys Skip Hire And Recycling Ltd	NN17 5XW
96	Jayplas	NN18 9EY
97	ST & NJ PAGE	NN5 6NL
98	Nine Mile Point Waste Transfer Facility	NP11 7HZ
99	GLJ RECYCLING LIMITED	NP11 7NL
100	Roydon Polymers	NP12 2XH
101	Eco-Oil Limited	NP19 4PL
102	EMR Willesden	NW10 6QY
103	European Metal Recycling Limited	NW10 9HA
104	Plasgran Ltd	PE15 0PE
105	Palm Paper Limited	PE34 3AL

106	P M K Recycling Limited	PE6 9PU
107	Augean South Limited	PE8 6XX
108	Castle Cement Limited	PE9 3SX
109	Veolia UK (Portsmouth)	PO3 5NR
110	C D Jordan & Son Ltd (EMR Group)	PO3 5NX
111	Leigh Environmental (Southern) Ltd	PO9 2PB
112	Quercia Ltd	PR6 7DT
113	IFP Forest & Paper Products (UK) Ltd	RG14 1JQ
114	Laverstoke Park Produce L L P	RG25 3DR
115	Rag Collection Ltd	RG30 1EA
116	Biffa Waste Services Ltd	RH1 4ER
117	Biogenie Site Remediation Ltd	RH1 4ER
118	A-tex	RH1 5JQ
119	Sean Patrick Cox	RH10 4PZ
120	M Fuller Grab Hire	RH6 9JG
121	R&S Etherington	RH6 9JH
122	Veolia E S Cleanaway (U K) Ltd	RM13 9DA
123	Rainham PRF	RM13 9YB
124	Rekola Recycling Limited	RM16 4AT
125	Hadfield Wood Recyclers Ltd	RM18 7HB
126	U R M (U K) Limited	RM18 7HS
127	Veolia Plastics	RM9 6LF
128	Whites	RM9 6QJ
129	Promet (Metals & Trading) Ltd	S25 3AF
130	C H P (Midlands) Ltd	S41 9BH
131	Cello Recycling Ltd	S71 3HX
132	AMG Resources Ltd.	SA15 2HD
133	Swan Alloy UK Ltd	SA5 4SF
134	SSSI Limited	SE14 5RS
135	Veolia ES Southwark Ltd	SE15 1AL
136	Romiley Board Mill	SK6 4D2
137	Community Reuse	SM3 9QP
138	Suez Recycling & Recovery South East Ltd	SM4 4AX
139	Thamesdown Recycling	SN6 6JR
140	Oxfam	SO15 3NE

141	Haz Tech	SO32 3QY
142	Tradebe Fawley Ltd	SO45 3NX
143	SO Recycle	SO51 0HR
144	Total Waste Management Ltd	SS13 1EB
145	Cory Environmental	SW8 5BX
146	Hawkhurst & Wealdon Metals	TN18 5EY
147	Omni Recycling Limited	TN2 3EE
148	Biffa Polymers Ltd	TS10 4RG
149	Drumcastle Limited	TW19 6A
150	Day Group Limited	TW8 9HF
151	Veolia	WA10 3LR
152	Novelis UK Ltd	WA4 1NN
153	Fresco Environmental	WA8 8PT
154	Brightgreen Plastics Limited	WF10 2AL
155	U R M (U K) Limited	WF9 3NR
156	Link Paper Recycling Ltd	WN2 1HF
157	Viridor Polymer Recycling Ltd	WN8 9SF
158	D T S Trading Ltd	WR9 9AH
159	G & P Batteries Limited	WS10 8JG
160	Ecobat Logistics	WS10 8JR
161	European Metal Recycling Ltd	WS10 8LW
162	Biffa Waste Services Ltd (Aldridge)	WS9 8EX
163	Walter & Sons Waste Management Ltd	WS9 8EX
164	Biffa G S Environmental Limited	WS9 8YH
165	Westgate	WS9 8YH
166	Veolia ES Birmingham	WV10 7DG
167	JMP Wilcox	WV14 7NH
168	Enablelink Ltd	WV14 8JN
169	Q C Polymer	WV14 8XR
170	Technicas	Madrid, Spain
171	Hydro Aluminium Rolled Products GmbH	Dusseldorf, Germany
172	Poligono Industrial La Pahilla Chiva	Valencia, Spain
173	Prezero Gestion	Madrid, Spain
174	Speira GmbH	Dusseldorf, Germany





Appendix A - table of tonnages sent to each off-taker by borough

MATERIAL & OFF TAKER	OFF TAKER POST CODE	Croydon LB	Merton LB	Sutton LB	Royal Borough of Kingston upon Thames	SLWP Total	DISTANCE FROM CR0 4TD (Miles)
Aerosols		0.00	0.25	0.00	0.03	0.28	
Suez Recycling & Recovery South East Ltd	CR4 3BQ		0.25		0.03	0.28	2
Aluminium cans		411.44	148.29	233.77	177.62	971.12	
Acetech Metals Ltd	DN19 7ES	2.35	1.65	0.91	3.37	8.28	160
Alutrade Ltd	B69 4NH	27.25	0.30	13.22	11.63	52.40	111
City Metals	B70 9DS	48.91	26.67	23.59	26.95	126.12	241
Hydro Aluminium Rolled Products GmbH	Germany D-41468		96.96			96.96	Outside UK
IMPETUS	LS9 0NX	3.08		3.46		6.54	175
N&P Crayford MRF Ltd	DA1 4QG			0.31		0.31	15
Novelis UK Ltd	WA4 1NN	10.84		4.19	4.58	19.61	171
Outside UK-EU	Various*	83.37	1.63	38.35		123.35	Outside UK
Outside UK-nonEU	Various*			1.72		1.72	Outside UK
P&D Material Recovery Ltd	ME4 4SR			1.72		1.72	30
Promet (Metals & Trading) Ltd	S25 3AF	17.33	14.88	8.65	2.53	43.39	145
Real Alloy UK Ltd	SA5 4SF	38.47	4.78	15.79	14.71	73.75	168
Reddy Pai Metals Ltd	CF10 4RU			1.62		1.62	130
Speira GmbH	Germany D-41488			37.66	35.51	73.17	Outside UK
SSSI Limited	SE14 5RS	5.08			3.44	8.52	8
Suez Recycling & Recovery South East Ltd	CR4 3BQ		1.42			1.42	2
Swan Alloy UK Ltd	SA5 4SF	59.84		30.13	9.78	99.75	168
Tandom Metallurgical Group Ltd	CW12 4XE	114.92		51.28	65.12	231.32	152
Thamesdown Recycling	SN6 6JR			0.48		0.48	75
Veolia ES Southwark Ltd	SE15 1AL			0.69		0.69	8
Automotive batteries		8.96	6.18	2.08	5.26	22.48	
Ecobat Logistics	WS10 8JR		2.40			2.40	115
G & P Batteries Limited	WS10 8JG	7.10	1.08	1.76		9.94	115
Metal & Waste Recycling Group Ltd	N18 2PD				5.26	5.26	16
Hawkhurst & Wealden Metals Ltd	TN18 5EY	1.86	2.70	0.32		4.88	36
Books		64.63	31.67	41.34	109.43	247.07	
British Heart Foundation	KT10 0BF	64.63	6.17	27.00	109.43	207.22	9
Rag Collection Ltd	RG30 1EA		25.50	14.34		39.84	38
Bric-a-brac		122.33	46.73	52.68	60.45	282.19	
Community Reuse	SM3 9QP	122.33	46.73	52.68	41.79	263.53	3

MATERIAL & OFF TAKER	OFF TAKER POST CODE	Croydon LB	Merton LB	Sutton LB	Royal Borough of Kingston upon Thames	SLWP Total	DISTANCE FROM CR0 4TD (Miles)
World Of Books	BN12 4QY				18.66	18.66	41
Card		548.44	115.75	100.89	111.65	876.73	
Deadman Confidential	CR4 4NB		61.18			61.18	1
DS Smith Paper Ltd	ME10 2TD	502.52		52.63		555.15	39
IFP Forest & Paper Products (UK) Ltd	RG14 1JQ			2.06		2.06	51
Outside UK-EU	Various*			0.34		0.34	Outside UK
Outside UK-nonEU	Various*	42.89	50.98	22.76		116.63	Outside UK
P&D Material Recovery Ltd	ME4 4SR			14.01		14.01	30
Palm Paper Limited	PE34 3AL				111.65	111.65	96
Smurfit Kappa UK Ltd	ME6 5AX	3.03	3.59			6.62	26
Suez Recycling And Recovery UK Ltd	BS11 8AQ			9.09		9.09	110
Clear glass		0	0	0	55.21	55.21	
Alexandra Warehouse	WA10 3LR				12.87	12.87	180
Ryder Point Works Wirksworth	DE4 4HE				42.34	42.34	134
Composite food and beverage cartons		132.14	0.58	0.00	66.20	198.92	
Sonoco Cores And Paper Ltd	HX4 9PY	132.14			65.74	197.88	174
Suez Recycling & Recovery South East Ltd	CR4 3BQ		0.58		0.46	1.04	2
Footwear only		22.69	6.13	4.03	6.04	38.89	
A-tex	RH1 5JQ	22.69	6.13	4.03	1.46	34.31	13
Furniture					4.583	4.583	
Kingston Community Furniture	KT3 3SF	0	0	0	4.583	4.583	6
Gas bottles		6.47	1.83	5.10	0.82	14.22	
Synergy Asset Services Limited	CT4 7BA	5.31	1.83	4.00		11.14	53
Wastecare Limited	GU34 5SQ	1.16		1.10	0.82	3.08	41
Green garden waste only		12,197.29	5,283.98	8,433.53	6,246.62	32,161.42	
Laverstoke Park Produce L L P	RG25 3DR	12,197.29	5,281.18	8,433.53	6,246.62	32,158.62	50
Veolia E S Cleanaway (U K) Ltd	RM13 9DA		2.80			2.80	34
HDPE [2]		795.72	2.86	646.54	271.72	1,716.84	
Biffa Polymers Ltd	TS10 4RG			0.55		0.55	225
Brightgreen Plastics Limited	WF10 2AL	14.97		10.86		25.83	171
Castle Cement Limited	PE9 3SX			0.16		0.16	88
Cherry Pipes Ltd (Cherry Plastics)	BT67 9JD	117.65		106.17	42.57	266.39	336
Closed Loop London Ltd	RM9 6LF	309.78		68.63		378.41	15

MATERIAL & OFF TAKER	OFF TAKER POST CODE	Croydon LB	Merton LB	Sutton LB	Royal Borough of Kingston upon Thames	SLWP Total	DISTANCE FROM CRO 4TD (Miles)
Plas Solutions	IP26 4JQ	4.22		3.18	1.86	9.26	79
J & A Young Leicester Ltd	LE11 0FJ	35.00		31.69	12.74	79.43	142
Jayplas	DE55 2DT			0.80		0.80	129
Monoworld Recycling Ltd	NN10 6BQ	14.64		18.69	2.43	35.76	66
Accuma Plastics	NN17 4DS			17.15	3.17	20.32	125
Plasgran Agricycle	LN8 2AG	2.8		2.11	1.23	6.14	195
Polypipe	LN9 6JW	149.98		135.5	48.17	333.65	177
Rekola Recycling Limited	RM16 4AT	15.76		15.05		30.81	23
Suez Recycling & Recovery South East Ltd	CR4 3BQ		2.86			2.86	2
Sun International Recycling Group Limited	NN17 4AP	31.31		2.59	4.12	38.02	82
Veolia Environmental Services	RM9 6LF	98.01		231.88	155.43	485.32	15
Viridor Waste Management Ltd	BS11 0YU	1.60		1.53		3.13	110
Ink & toner cartridges		0.00	0.50	0.00	0.00	0.50	
BCMY Ltd	BN17 7QU		0.50			0.50	
LDPE [4]		0.00		0.02		0.02	
British Polythene Limited	DE75 7RG			0.02		0.02	124
Mineral Oil		35.90	11.72	13.76	12.31	73.69	
Eco-Oil Limited	NP19 4PL				12.31	12.31	123
Slicker Recycling Limited	DY13 9BZ	35.90	11.72	13.76		61.38	112
Mixed cans		0.00	0.00	2.88	5.50	8.38	
Monoworld Recycling Ltd	NN10 6BQ			0.62		0.62	66
Multiple destinations	Unknown				1.66	1.66	Unknown
Westgate	WS9 8YH			2.26		2.26	57
Suez Recycling & Recovery South East Ltd	CR4 3BQ				3.83	3.83	2
Mixed garden and food waste		112.48	0.00	0.00	0.00	112.48	
Biogenie Site Remediation Ltd	RH1 4ER	112.48				112.48	10
Mixed glass		8,104.39	4,031.92	3,555.83	3,849.02	19,541.16	
A B Waste Management Limited	DY4 9BS			9.65		9.65	115
Alexandra Warehouse, St Helens	WA10 3LR		111.35			111.35	180
Biffa G S Environmental Limited	N9 0BD	3.74				3.74	17
Cello Recycling Ltd	S71 3HX			155.44	164.18	319.62	162
Day Group Recresco	CH65 1AB			440.23		440.23	177
Day Group	ME9 8SR			309.06		309.06	39

MATERIAL & OFF TAKER	OFF TAKER POST CODE	Croydon LB	Merton LB	Sutton LB	Royal Borough of Kingston upon Thames	SLWP Total	DISTANCE FROM CR0 4TD (Miles)
Day Group Limited	TW8 9HF	2,128.87	8.84	579.93	1,049.75	3,767.39	11
Dunstable Waste Transfer and Recycling Facility	LU5 5BQ			3.28		3.28	39
Eastern Waste Disposal Limited	CO7 0SD			17.99		17.99	59
Glass Recycling (UK) Ltd	S71 3HX	389.68	47.08	7.35	21.42	465.53	162
URM	RM18 7HS				1257.3	1,257.30	22
Day Group Recresco	CH65 1AB				1303.789	1,303.79	177
Multiple destinations	Unknown				12.13	12.13	Unknown
Nine Mile Point Waste Transfer Facility	NP11 7HZ			9.69		9.69	131
Palm Recycling Ltd	CV6 4QG				12.32	12.32	95
Recresco Limited	CH65 1AB	2,602.29	10.42	730.96		3,343.67	177
Stacey Processing Ltd	DE4 4HE	96.50		39.29		135.79	134
Suez Recycling & Recovery South East Ltd	CR4 3BQ		35.69		28.13	63.82	2
Garth Road Waste Transfer Station	SM4 4NJ	19.54				19.54	4
U R M (U K) Limited	WF9 3NR	2,181.96	383.28	950.74		3,515.98	160
Veolia	WA10 3LR	657.07	3,411.61	282.74		4,351.42	180
Veolia Croydon Transfer Station	CR0 4XB	17.50				17.50	0
Veolia ES Birmingham	WV10 7DG		15.38			15.38	123
Veolia ES Southwark Ltd	SE15 1AL	7.24	8.27	4.97		20.48	8
Whites	RM9 6QJ			14.51		14.51	15
Mixed paper & card		9,699.21	5,798.49	4,806.91	4,576.73	24,881.34	
Baileys Skip Hire And Recycling Ltd	NN17 5XW			32.99		32.99	81
Biffa G S Environmental Limited	N9 0BD	6.75				6.75	17
C H P (Midlands) Ltd	S41 9BH			3.53		3.53	140
Drumcastle Limited	TW19 6A			4.00		4.00	NF (1st PC NF)
DS Smith Paper Ltd	ME10 2TD	7,091.29	5,728.61	4,701.40		17,521.30	39
Fresco Environmental	WA8 8PT			16.24		16.24	176
Link Paper Recycling Ltd	WN2 1HF			16.19		16.19	182
Manchester Paper Plastic Ltd	M12 5BW			7.31		7.31	168
Outside UK-EU	Various*			5.50		5.50	Outside UK
Outside UK-nonEU	Various*		69.88	4.72		74.60	Outside UK
P&D Material Recovery Ltd	ME4 4SR			5.50		5.50	30
Palm Paper Limited	PE34 3AL				4,576.73	4,576.73	96
Romiley Board Mill	SK6 4D2			4.22		4.22	230

MATERIAL & OFF TAKER	OFF TAKER POST CODE	Croydon LB	Merton LB	Sutton LB	Royal Borough of Kingston upon Thames	SLWP Total	DISTANCE FROM CR0 4TD (Miles)
Smurfit Kappa UK Ltd	ME6 5AX			0.05		0.05	26
SO Recycle	SO51 0HR			5.26		5.26	65
Veolia E S (U K) Ltd	BS30 5LW	2,601.17				2,601.17	100
Mixed Plastic Bottles		26.22	1,605.54	126.08	1.41	1,759.25	
Baileys Skip Hire And Recycling Ltd	NN17 5XW			22.15		22.15	81
Biffa G S Environmental Limited	WS9 8YH			1.41		1.41	152
Biffa Waste Services Ltd (Aldridge)	WS9 8EX	1.90	242.38			244.28	114
Brightgreen Plastics Limited	WF10 2AL		7.11	1.53		8.64	171
Monoworld Ltd	MK44 1NB	1.63	115.18	35.85		152.66	61
N&P Crayford	DA1 4QG			8.64		8.64	15
Outside UK-EU	Various*			24.71		24.71	Outside UK
P M K Recycling Limited	PE6 9PU		2.20	6.79		8.99	93
P&D Material Recovery Ltd	ME4 4SR			24.71		24.71	30
PRO ENVIRONMENTAL LIMITED	NG14 6NR	2.85	30.04			32.89	122
Rainham PRF	RM13 9YB		145.2			145.20	16
Roydon Resource Recovery Ltd	M27 8LU		122.73			122.73	174
Suez Recycling & Recovery South East Ltd	CR4 3BQ				1.41	1.41	2
Veolia E S Cleanaway (U K) Ltd	RM13 9DA	9.26	391.87			401.13	34
Viridor Plastic Recycling	ME2 4QP	10.58	433.76	0.29		444.63	28
Walter & Sons Waste Management Ltd	WS9 8EX		115.07			115.07	114
Other compostable waste		748.94	0.00	998.88	213.30	1,961.12	
Biogenie Site Remediation Ltd	RH1 4ER	748.94				748.94	10
Sweeptech Environmental Services Ltd	BN5 9SE			998.88	213.30	1,212.18	33
Other materials		267.39	1,668.89	28.23	455.07	2,419.58	
Haz Tech	SO32			0.01		0.01	65
Leigh Environmental (Southern) Ltd	PO9 2PB	0.04				0.04	50
Medisort Ltd	BN17 7QU			0.20		0.20	43
N+P Subcoal Production TSP Ltd	DA1 4QG	4.87	5.56			10.43	15
Nine Mile Point Waste Transfer Facility	NP11 7HZ		15.86			15.86	131
Oakleaf Cwmfelinfach	NP11 7HZ		2.53			2.53	131
Suez Recycling & Recovery	BS11 8AQ			28.02		28.02	110
Suez Recycling & Recovery South East Ltd	CR4 3BQ	262.48	167.51			429.99	2
Suez Recycling & Recovery UK Ltd	B8 1AE		1.90			1.90	106

MATERIAL & OFF TAKER	OFF TAKER POST CODE	Croydon LB	Merton LB	Sutton LB	Royal Borough of Kingston upon Thames	SLWP Total	DISTANCE FROM CR0 4TD (Miles)
Sweeptech Environmental Services Ltd	BN5 9SE		1,272.60		455.07	1,727.67	33
Veolia E S Southwark Ltd	SE15 1NZ		198.79			198.79	8
Viridor Waste (Thames) Ltd	CR0 4TD		4.14			4.14	0
OTHER PLASTICS [7]		0.00	5.58	86.37	226.85	318.80	
Brightgreen Plastics Limited	WF10 2AL				6.80	6.80	171
Carretera Nacional	N1 9JY				4.84	4.84	10
Technicas	Madrid, Spain				16.79	16.79	Outside UK
C H P (Midlands) Ltd	S41 9BH			9.06		9.06	140
Cherry Pipes Ltd (Cherry Plastics)	BT67 9JD				10.49	10.49	336
Clean Tech Europe Limited	DN21 5TU				79.28	79.28	141
Holmes Way Boston Road Industrial Estate	LN9 6JW				20.74	20.74	125
J & A Young Leicester Ltd	LE11 0FJ				3.95	3.95	142
Monoworld Recycling Ltd	NN10 6BQ				4.47	4.47	66
Omni Recycling Limited	TN2 3EE			10.96		10.96	24
Outside UK-EU	Various*			7.22		7.22	Outside UK
Accuma Plastics	NN17 4DS				6.88	6.88	81
P M K Recycling Limited	PE6 9PU			0.74		0.74	93
P&D Material Recovery Ltd	ME4 4SR			7.22		7.22	30
Poligono Industrial La Pahilla Chiva	Valencia, Spain				1.1	1.10	Outside UK
Prezero Gestion	Madrid, Spain				15.27	15.27	Outside UK
Quercia Ltd	PR6 7DT			2.31		2.31	191
St Johns Road Grays	RM16 4AT				7.16	7.16	23
Suez Recycling & Recovery South East Ltd	CR4 3BQ		5.58			5.58	2
Sweeptech Environmental Services Ltd	BN5 9SE				4.16	4.16	33
Jayplas	NN18 9EY				11.55	11.55	79
Veolia Plastics	RM9 6LF				32.64	32.64	15
Viridor Waste Management Limited	BS11 0YU				0.73	0.73	110
Whites	RM9 6QJ			48.86		48.86	15
Other Scrap metal		967.95	452.15	443.65	474.43	2,338.18	
Acetech Metals Ltd	DN16 1DN			2.89		2.89	154
Alutrade Ltd	B69 4NH		7.64			7.64	111
B Nebbett & Son Ltd	CR4 4HX	724.43				724.43	1
Brooker House	ME10 3SY			0.52		0.52	38

MATERIAL & OFF TAKER	OFF TAKER POST CODE	Croydon LB	Merton LB	Sutton LB	Royal Borough of Kingston upon Thames	SLWP Total	DISTANCE FROM CRO 4TD (Miles)
City Metals Recycling Ltd	B70 9DS	4.39	38.65	1.00	1.53	45.57	150
Cooper Barnes Metals Ltd (EMR Group)	BN43 6RN	9.73				9.73	38
Enablelink Ltd	WV14 8JN		29.46			29.46	115
European Metal Recycling Ltd	CR0 3DH		178.78	287.31	367.22	833.31	0
EMR Mitcham	CR4 4HX		186.72	75.81		262.53	1
AA Battery Recycling	CV11 6RS			0.08		0.08	96
London Mining Associates Limited	ME20 7FG			0.39		0.39	26
M D J Light Bros (Scrap Processors) Ltd	BN8 6JN	19.88			32.20	52.08	37
Metal & Waste Recycling Group Ltd	N18 2PD				0.27	0.27	16
Morris & Co Handlers Ltd	DN11 0PS	0.05	0.08	1.85		1.98	150
N&P Crayford MRF Ltd	DA1 4QG			0.17		0.17	15
SSSI Limited	SE14 5RS	198.03	4.55	69.98	62.89	335.45	8
Swan Alloy UK Ltd	SA5 4SF		3.40			3.40	168
Sweepstech Environmental Services Ltd	BN5 9SE				6.59	6.59	33
Tandom Metallurgical Group Ltd	CW12 4XE		1.64			1.64	152
Total Waste Management Ltd	SS13 1EB	10.39		3.02	3.74	17.15	32
Veolia ES Southwark Ltd	SE15 1AL	1.04	1.23	0.63		2.90	8
Paint		6.10	0.00	0.00	0.00	6.10	
Veolia ES (UK) Limited	MK43 9LY	6.10				6.10	50
Paper		232.49	180.55	225.42	131.37	769.83	
DS Smith Paper Ltd	ME10 2TD	45.37	160.56	114.93		320.86	39
Deadman Confidential	CR4 4NB		19.99			19.99	1
Outside UK-nonEU	Various*	59.11		87.37		146.48	Outside UK
Palm Paper Limited	PE34 3AL				131.37	131.37	96
Smurfit Kappa UK Ltd	ME6 5AX			2.97		2.97	26
Suez Recycling And Recovery Uk Ltd	BS11 8AQ			20.15		20.15	110
Garth Road Transfer Station	SM4 4NJ	76.54				76.54	4
Veolia Croydon Transfer Station	CR0 4XB	51.46				51.46	0
PET [1]		1,175.57	4.47	479.98	379.94	2,039.96	
1-6 Kingsnorth Ind Est	ME3 9ND			8.40		8.40	32
Biffa Polymers Ltd	TS10 4RG			0.58		0.58	225
Technicas	Madrid, Spain	39.58				39.58	Outside UK
Carretera Nacional	N1 9JY				14.68	14.68	10

MATERIAL & OFF TAKER	OFF TAKER POST CODE	Croydon LB	Merton LB	Sutton LB	Royal Borough of Kingston upon Thames	SLWP Total	DISTANCE FROM CRO 4TD (Miles)
C D Jordan & Son Ltd (EMR Group)	PO3 5NX	8.61				8.61	56
Clean Tech Europe Limited	DN21 5TU	776.99		264.41	257.85	1,299.25	141
D T S Trading Ltd	WR9 9AH			2.91		2.91	106
Veolia UK (Portsmouth)	PO3 5NR	4.17			1.71	5.88	56
J & A Young (Leicester) Ltd	DE55 2FT	97.53		24.10	18.92	140.55	129
Monoworld Recycling Ltd	MK44 1NB	38.45		36.14	15.87	90.46	61
Outside UK-EU	Various*	82.28		40.46		122.74	Outside UK
Outside UK-nonEU	Various*			2.15		2.15	Outside UK
Accuma Plastics	NN17 4DS			2.09	4.73	6.82	81
EWS	RM16 4AT				6.57	6.57	23
Jayplas	NN18 9EY				11.93	11.93	79
PRO ENVIRONMENTAL LIMITED	NG14 6NR	74.65		5.57	34.33	114.55	122
Q C Polymer	WV14 8XR	4.34		0.84	1.87	7.05	115
Rekola Recycling Limited	RM16 4AT	16.08		33.30		49.38	23
Roydon Polymers	NP12 2XH	1.44		2.33	0.62	4.39	132
Roydon Exports BiffaWES Building Plastics Road Wilton International Redcar Middlesborough	TS10 4RG			0.28		0.28	225
Suez Recycling & Recovery South East Ltd	CR4 3BQ		4.47			4.47	2
Suez Recycling And Recovery Uk Ltd	BS11 8AQ			2.73		2.73	110
Sun International Recycling Group Limited	NN17 4AP	20.98		1.85	4.23	27.06	82
Prezero Gestion	Madrid, Spain	5.85				5.85	Outside UK
Veolia E S Cleanaway (U K) Ltd	RM13 9DA			39.88		39.88	34
Viridor Polymer Recycling Ltd	WN8 9SF			1.39		1.39	235
Viridor Waste Management Limited	BS11 0YU	4.62		0.19	2.91	7.72	110
Plasterboard		211.18	46.42	46.40	49.98	353.98	
Suez Recycling & Recovery South East Ltd	SM4 4AX	211.18	46.42	46.40	49.98	353.98	4
Post consumer, non automotive batteries		7.31	2.15	2.82	1.63	13.91	
European Metal Recycling Limited	NW10 9HA				1.63	1.63	15
Hawkhurst & Wealdon Metals	TN18 5EY	7.31	2.15	2.82		12.28	36
PP [5]		333.87	0.08	5.52	159.35	498.82	
Brightgreen Plastics Limited	WF10 2AL	50.26		1.04	24.05	75.35	171
Berry Circular Polymers	CV31 3SS	154.75		1.41	19.44	175.60	86
Plas Solutions	IP26 4JQ			1.46	5.2	5.20	79

MATERIAL & OFF TAKER	OFF TAKER POST CODE	Croydon LB	Merton LB	Sutton LB	Royal Borough of Kingston upon Thames	SLWP Total	DISTANCE FROM CR0 4TD (Miles)
Plasgran Ltd	PE15 0PE				37.06	37.06	78
Plasgran - Berry Circular	CV31 3SS			1.46	55.01	56.47	86
Plasgran Agricycle	LN8 2AG	23.3		0.42	6.23	29.95	140
Plasgran Monarch	NE32 3HG	17.87		0.41		18.28	254
Street Fuel Limited	ME4 4SR	82.15		0.66	9.84	92.65	30
Suez Recycling & Recovery South East Ltd	CR4 3BQ		0.08			0.08	2
Viridor Waste Management Limited	BS11 0YU	5.54		0.12	2.52	8.18	110
Residual waste		91,103.84	46,359.15	40,144.49	32,693.46	210,300.94	
Augean South Limited	PE8 6XX				68.80	68.80	85
Biffa Waste Services Ltd	RH1 4ER		19.78		17.52	37.30	10
Cory Barking Operations Ltd	IG11 0DW		546.15			546.15	14
Cory Environmental	SW8 5BX		90.26		126.10	216.36	8
Witcham Meadlands Landfill	CB6 2AY				4.74	4.74	73
Pinden Limited	DA2 8EB		2.92			2.92	19
Robert Hopkins Environmental Services Limited	B70 7HE				1.20	1.20	111
Sean Patrick Cox	RH10 4PZ	46.25				46.25	19
SRCL Ltd	ME20 6SQ				21.79	21.79	26
ST & NJ PAGE	NN5 6NL				0.03	0.03	70
Suez Recycling & Recovery South East Ltd	SM4 4AX	1.14			2,566.60	2,567.74	4
Tradebe Fawley Ltd	SO45 3NX				0.63	0.63	65
Veolia ES South Downs Ltd	BN9 0HE	704.94				704.94	41
Viridor Waste Management Ltd	CR0 4TD	90,351.51	45,700.04	40,144.49	26,815.53	203,011.57	0
Kemsley Sustainable Energy Plant	ME10 2TD				3,070.54	3,070.54	39
Rubble		2,980.68	846.56	178.76	888.48	4,894.48	
M Fuller Grab Hire	RH6 9JG				180.62	180.62	14
R&S Etherington	RH6 9JH	2926.46	535.42	177.79	557.5	4,197.17	14
Robins Michael	BN6 9BS	6.80	311.14		150.36	468.30	33
Sweeptech Environmental Services Ltd	BN5 9SE	47.42		0.97		48.39	33
Soil		994.36	346.16	149.38	303.62	1,793.52	
Dunstable Waste Transfer and Recycling Facility	LU5 5BQ			1.76		1.76	39
Sweeptech Environmental Services Ltd	BN5 9SE	994.36	346.16	147.62	303.62	1,791.76	33
Steel cans		709.86	385.27	344.83	309.53	1,749.49	
Acetech Metals Ltd	DN16 1AP	302.12	2.50	148.10	131.26	583.98	153

MATERIAL & OFF TAKER	OFF TAKER POST CODE	Croydon LB	Merton LB	Sutton LB	Royal Borough of Kingston upon Thames	SLWP Total	DISTANCE FROM CR0 4TD (Miles)
AMG Resources Ltd.	SA15 2HD		31.77			31.77	174
Enablelink Ltd	WV14 8JN	262.08	148.94	122.24	70.17	603.43	115
European Metal Recycling Ltd	WS10 8LW		89.20			89.20	115
GLJ RECYCLING LIMITED	NP11 7NL		67.79			67.79	130
London and Kent Metals	ME10 3SY			0.52		0.52	38
London Mining Associates Limited	ME20 7FG			0.40		0.40	26
Morris & Co Handlers Ltd	DN11 0PS	45.68	3.67	22.45	63.93	135.73	150
Sims Group U K Ltd	B66 2LF	99.76	33.26	51.11	44.17	228.30	109
Sims Group U K Ltd	DE21 4BL		4.59			4.59	157
SSSI Limited	SE14 5RS	0.22	0.33	0.01		0.56	8
Suez Recycling & Recovery South East Ltd	CR4 3BQ		3.22			3.22	2
Textiles & footwear		5.29	214.30	151.77	76.47	447.83	
A-tex	RH1 5JQ		1.96			1.96	13
British Heart Foundation	KT10 0BF				28.95	28.95	9
Chris Carey Collections	BR3 1LW		10.91	20.99		31.90	5
D&M Recycling	CR0 4TD			35.03		35.03	0
Greendaw Recycling Ltd	CR0 4TD		201.43	26.2	31.095	258.73	0
Green World Trading Limited	GU6 8TB			8.60		8.60	25
Green World Recycling Ltd	DY9 8RG			6.24		6.24	145
JMP Wilcox	WV14 7NH	5.29				5.29	116
Lawrence M Barry & CoBritannia	E16 4TG			54.71		54.71	11
Soex European Recycling Co Ltd	CR0 4TD				11.916	11.92	0
Traid	HA9 OYJ				4.508	4.51	22
Textiles only		400.90	27.73	20.53	43.06	492.22	
A-tex	RH1 5JQ	4.91				4.91	13
Chris Carey Collections	BR3 1LW	104.785	27.73	20.53	43.058	196.10	5
Green World	BT35 8NN	50.115				50.12	322
Unit 1 Pytchley Lodge Industrial Estate	NN15 6JQ	216.18				216.18	73
Oxfam	SO15 3NE	24.91				24.91	65
Unknown		3,087.90	4,146.03	4,303.12	1,133.51	12,670.56	
Unknown - currently undergoing further data analysis.	n/a	3,087.9	4,146.03	4,303.12	1,133.51	12,670.56	n/a

MATERIAL & OFF TAKER	OFF TAKER POST CODE	Croydon LB	Merton LB	Sutton LB	Royal Borough of Kingston upon Thames	SLWP Total	DISTANCE FROM CR0 4TD (Miles)
Vegetable Oil		7.95	3.40	1.00	2.00	14.35	
Freedom Recycling Ltd	IP26 4JQ	7.95	3.40	1.00	2.00	14.35	79
Waste food only		9,041.77	5,510.06	5,861.85	4,438.84	24,852.52	
Olleco	HP22 5WJ				4,438.84	4,438.84	39
Riverside A D Limited	CR4 4NA	5,682.89				5,682.89	1
Severn Trent Green Power	KT16 0EF	3,358.88	5,510.06	5,861.85		14,730.79	19
WEEE - Flourescent tubes and other light bulbs		3.43	1.06	0.92	1.15	6.56	
Mercury Recycling Limited	M17 1HW	3.43	1.06	0.92	1.15	6.55	170
WEEE - Fridges & Freezers		162.69	131.44	73.93	89.88	457.94	
European Metal Recycling Limited	NW10 9HA	122.49	122.10	43.48		288.07	15
EMR Willesden	NW10 6QY				72.81	72.81	11
M D J Light Bros Ltd	BN8 6JN	40.20	9.34	30.45	17.07	97.06	37
WEEE - Large Domestic App		99.60	64.43	36.38	52.11	252.52	
B Nebbett & Son Ltd	CR4 4HX	99.60				99.60	1
European Metal Recycling Ltd	CR0 3DH		15.17	5.60		20.77	0
EMR Mitcham	CR4 4HX		49.26	30.78	52.09	132.13	1
Kingston Community Furniture	KT3 3SF				0.02	0.02	6
WEEE - Small Domestic App		484.88	218.73	244.29	217.76	1,165.66	
Medisort Ltd	BN17 7QU	1.71	0.34	0.32		2.37	43
Sweep Kuusakoski Ltd	ME10 2QB	480.12	218.39	243.97	215.88	1,158.36	38
Traid	HA9 OYJ				1.886	1.89	20
Veolia ES (UK) Limited	MK43 9LY	2.83				2.83	50
Haz Tech	SO32 3QY	0.22				0.22	51
WEEE - TVs & Monitors		89.24	40.68	49.90	41.42	221.24	
M D J Light Bros (Scrap Processors) Ltd	BN8 6JN	89.24	30.22	49.90	41.42	210.78	37
Sweep Kuusakoski Ltd	ME10 2QB		10.46			10.46	38
Wood		4,382.90	1,602.95	1,944.62	1,688.95	9,619.42	
Boomeco Limited	BS11 0YB		376.56			376.56	110
Hadfield Wood Recyclers Ltd	RM18 7HB				1,688.95	1,688.95	22
Pearce Recycling Company Ltd	AL4 0JY	2,477.28	1,226.39	1,944.62		5,648.29	26
Veolia E S (U K) Ltd	BS30 5LW	1,905.62				1,905.62	100
GRAND TOTAL		149,794	79,351	73,848	59,633	362,626	

* Further details of non-UK off-takers are held by the boroughs - contact SLWP for details.

